

Suit Trouser and Shirt Styles Menu

Suit Jacket Styles

Single Breasted Styles



1. Single Breasted - 1 Button



2. Single Breasted - 2 Buttons



3. Single Breasted - 3 Buttons



4. Single Breasted - 4 Buttons

Double Breasted Styles



5. Double Breasted 2 Buttons-1 Working



6. Double Breasted 4 Buttons-1 Working



7. Double Breasted 4 Button-2 Working



8. Double Breasted 6 Button-1 Working

Double Breasted Styles (continued)



9. Double Breasted 6 Button-2 Working



10. Double Breasted 6 Button-3 Working



11. Double Breasted 8 Button-3 Working



12. Double Breasted 8 Button-4 Working

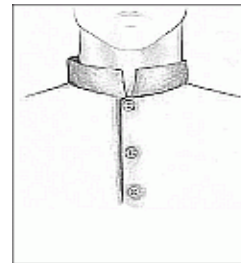
Suit Jacket's Collar Styles



1. Notch Lapels



2. Peak Lapels



3. Mandarin

Suit Jacket's Vent Styles



1. Close Vented

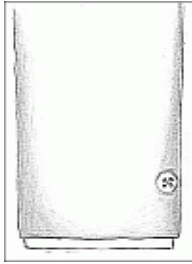


2. Single Vented

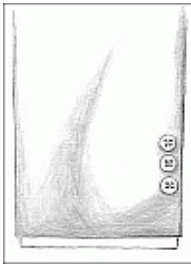


3. Double Vented

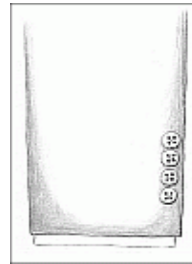
Suit Jacket's Cuff Styles



1 Button



3 Buttons



4 Buttons

Suit Jacket's Pocket Styles



Straight Pocket No.1



Straight Pocket No.2



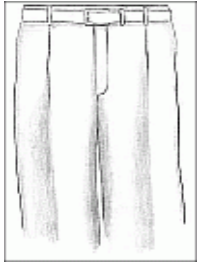
Slanted Pocket No.1



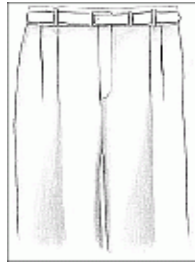
Slanted Pocket No.2

Trouser Style

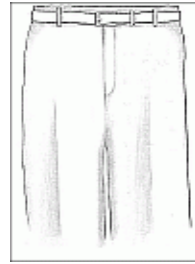
Pleat Style



1. Single Pleated

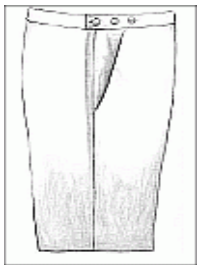


2. Double Pleated

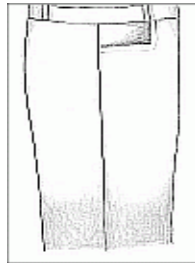


3. Flat Pleated

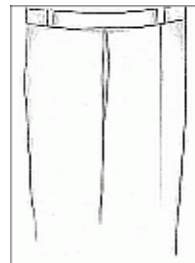
Pocket Style



1. Cross Pocket



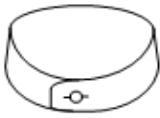
2. Horizontal Pocket



3. Vertical Pocket

Shirt Style Menu

Shirt's Collar Styles



1. Band Collar



2. Button Down Collar



3. Hidden Button Collar

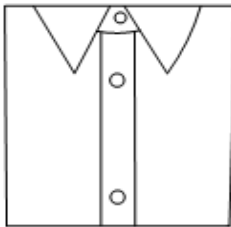


4. Classic Collar

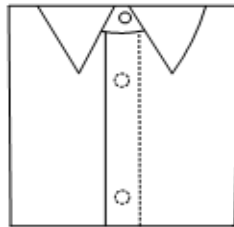


5. Cutaway Collar

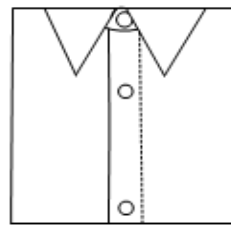
Shirt's Front Styles



1. Box Style

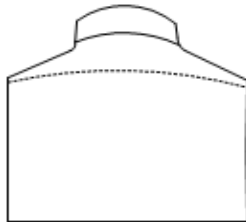


2. Fly Style

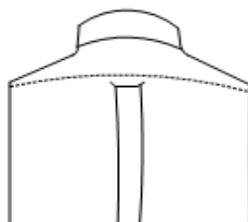


3. French Style

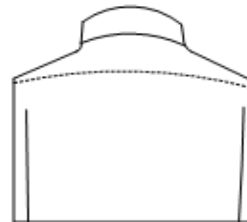
Shirt's Back Styles



1. Plain



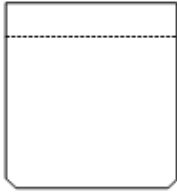
2. Box-Pleated



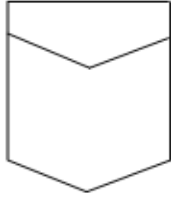
3. Two-Side Pleated

Shirt Style Menu (cont')

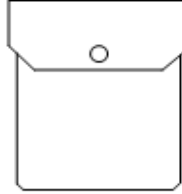
Shirt's Pocket Styles



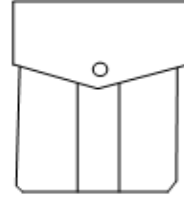
1. Classic



2. Diamond

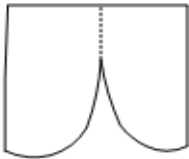


3. Flap

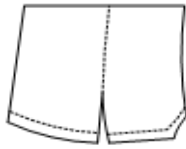


4. Flap-Pleated

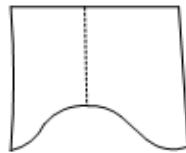
Shirt's Bottom Styles



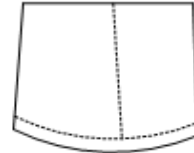
1. Cut



2. Cut-Straight



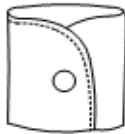
3. Round



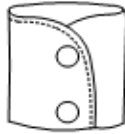
4. Straight

Shirt's Cuff Styles

Round Cuff Style

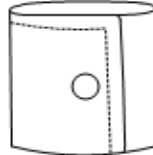


1 Button

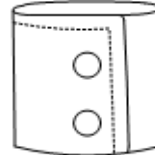


2 Buttons

Square Cuff Style

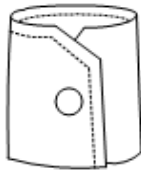


1 Button

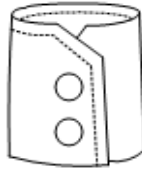


2 Buttons

Cut Corner Cuff Style



1 Button



2 Buttons

French Cuff Style

